



**WALLTITE®**

The airtight insulation solution

CI/SfB | | (42) | Yn6 | (M2)|  
October 2011

# New timber frame wall insulation

Data sheet 3.1

 **BASF**

The Chemical Company

# New timber frame wall insulation Data sheet 3.1

## Description

WALLTITE is applied directly between the studs onto the OSB. The stud is sufficient to meet the recommended elemental U-value.

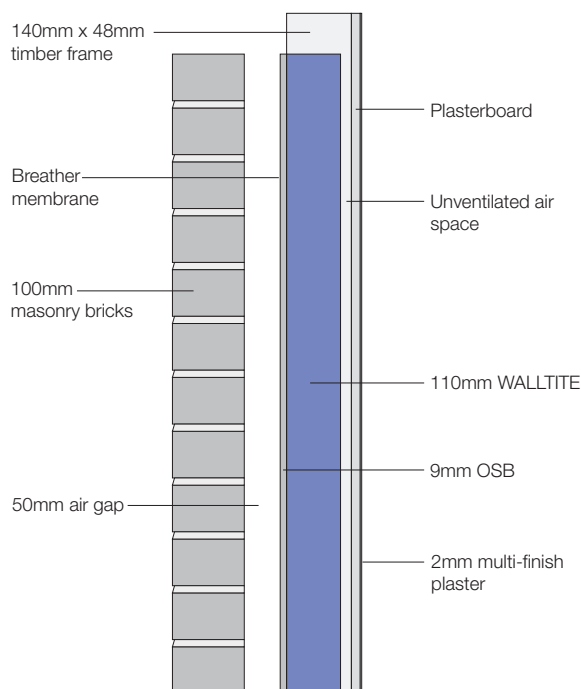
Unwanted air leakage and air infiltration is minimised and sound attenuation improved.

Polyurethane foams are hypo allergenic and so contain no fibres or dust and no noxious vapours. Mechanical and electrical services can be fixed between the foam and the plasterboard. WALLTITE is very quick to install minimising on overhead costs, site storage and waste.

## Certification

BBA Certificate No. 11/4816.

WALLTITE has undergone various performance tests. Certificates are available on request.



## Technical data

Specification:	WALLTITE sprayed between studwork of timber framed wall
NBS clause:	P10 205A
Conforms to:	Part L1A 2010, Appendix A
Average depth:	55mm
U-value:	0.30W/m <sup>2</sup> K
Condensation risk:	Zero

## U-value calculation

Construction details (Brick/block cavity wall)	Thickness (mm)
Brick – outer Leaf	103
Airspace in cavity wall construction	
OSB	9
Spray applied WALLTITE	55
Cavity >= 25mm, wall	
Plasterboard	12.5
Finishing plaster	2
<b>U-value</b>	<b>0.30W/m<sup>2</sup>K</b>



NBS Plus

