



WALLTITE®

The airtight insulation solution

CI/SfB | | (42) | Yn6 | (M2)
October 2011

Refurbished masonry wall insulation (timber frame)

Data sheet 3.2

 **BASF**

The Chemical Company

Refurbished masonry wall insulation (timber frame) Data sheet 3.2

Description

WALLTITE can be applied directly onto a solid masonry wall, between 90mm or 140mm timber studs, without the need for traditional adhesion promoters or mechanical fixings.

Mechanical and electrical services can be fixed between the foam and the plasterboard.

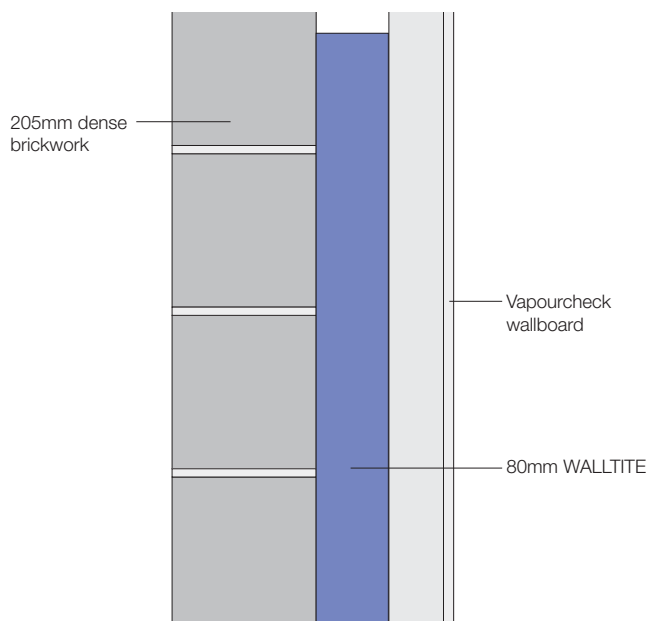
WALLTITE guarantees additional support and stability for the whole of the timber frame construction.

The resulting continuous insulation and air barrier system will provide a cleaner, healthier more comfortable environment for any "hard to treat" home situation.

Certification

BBA Certificate No. 11/4816.

WALLTITE has undergone various performance tests. Certificates are available on request.



Technical data

NBS clause:	P10 15A
Conforms to:	Part L1B (2010) Upgrading retained thermal element

U-value calculation

Construction details (solid masonry wall)	Thickness (mm)
Outside surface resistance	
Brick, dense, external	225
WALLTITE (behind studwork)	25
WALLTITE (between studwork)	75
Vapourcheck wallboard	12.5
Inside surface resistance	
U-value	0.24W/m²K

(Correction for mechanical fasteners, Delta Uf = 0.000W/m²K)

(Correction for air gaps, Delta Ug = 0.000W/m²K)



NBS Plus

