



**WALLTITE®**

The airtight insulation solution

C/SfB | | (45) | Yn6 | (M2)  
October 2011

# Suspended timber floor insulation

Data sheet 4.5

 **BASF**

The Chemical Company

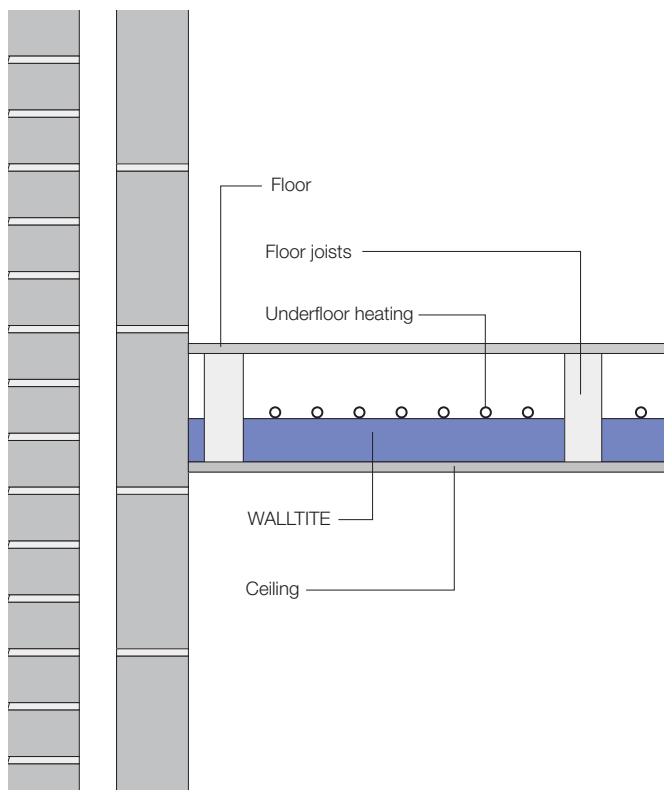
# Suspended timber floor insulation Data sheet 4.5

## Description

WALLTITE floor insulation is advisable where underfloor heating is installed. The foam barrier separates heated and unheated rooms and in this way, reduces any loss of valuable heating energy into spaces where it is not needed. Rooms with just occasional use benefit from WALLTITE insulation, as the floor heats up more rapidly.

## Certification

WALLTITE has undergone various performance tests. Certificates are available on request.



## Technical data

Element:	Floor - U-value Element 1
Basement soffit	
Internal surface emissivity:	High
External surface emissivity:	High

## U-value calculation

Construction details (beam/block floor)	Thickness (mm)
Outside surface resistance	
Hardwood dry	15
Cavity $\geq 25$ mm, floor (CIBS)	
WALLTITE	75
Plasterboard (BS 5250)	12.5
Inside surface resistance	
<b>U-value</b>	<b>0.30W/m<sup>2</sup>K</b>

U-value, Combined Method : 0.30 W/m<sup>2</sup>K (upper /lower limit 3.314 / 3.314 m<sup>2</sup>K/W, dU<sub>f</sub> 0.0000, dU<sub>g</sub> 0.0000, dU<sub>p</sub>0.0000, dU<sub>r</sub>0.0000, (Correction for mechanical fasteners, Delta U<sub>f</sub> = 0.000W/m<sup>2</sup>K) (Correction for air gaps, Delta U<sub>g</sub> = 0.000W/m<sup>2</sup>K)

